

MONTHLY MEMBERSHIP PROGRESS REPORT

District 17 K

Results as of: 5/31/2025

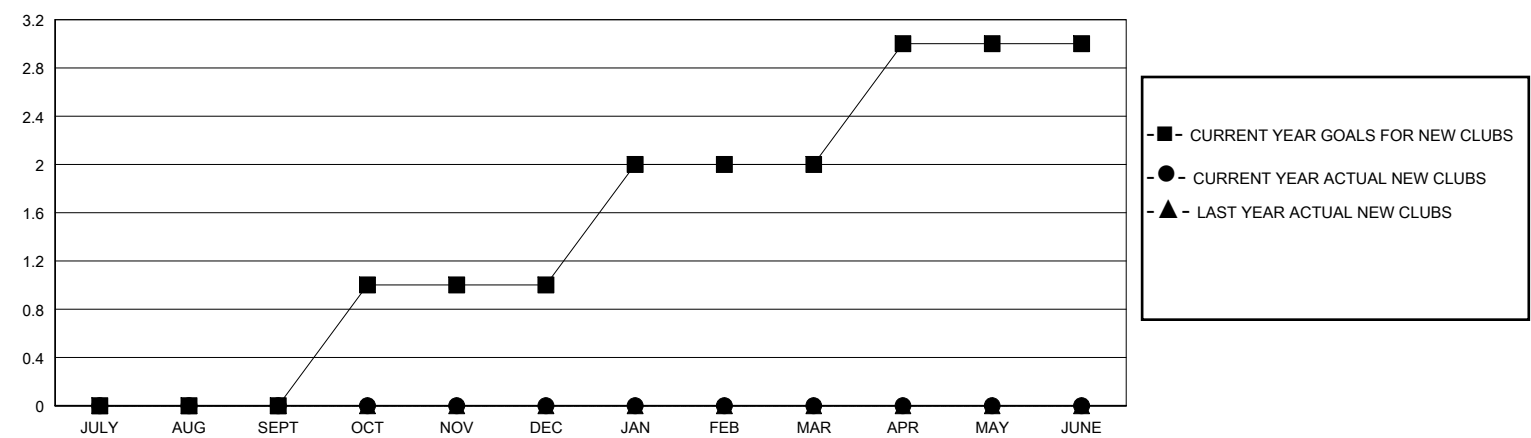
GMT:

LOCATION KANSAS

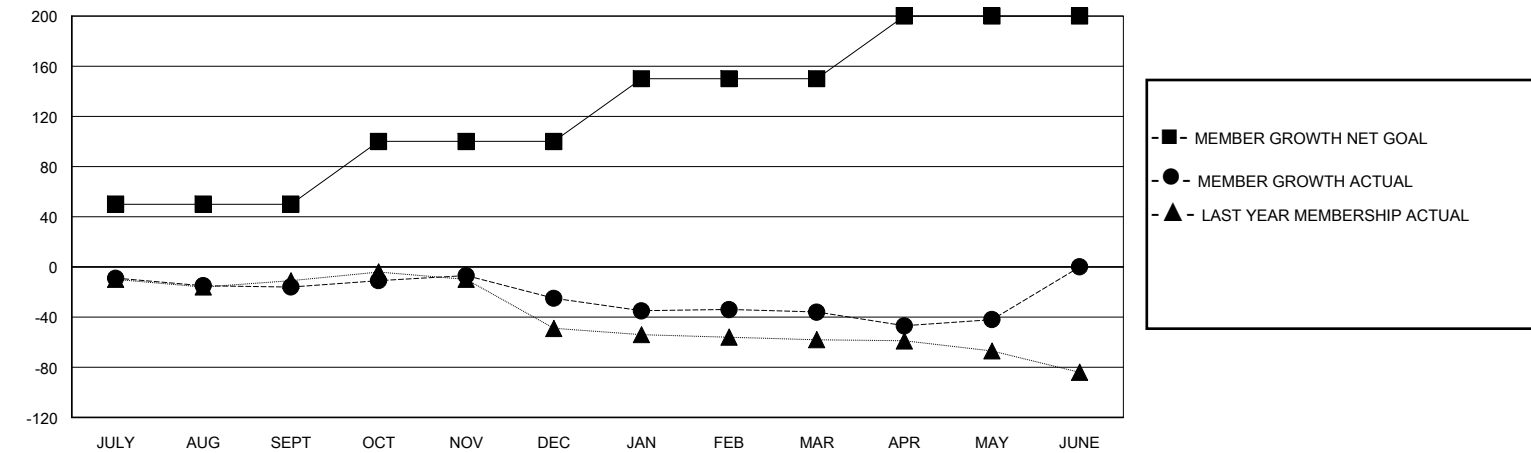
GMT CA

Clubs				Members			
RESULTS FOR 2024-2025				RESULTS FOR 2024-2025			
QUARTER	NEW CLUB GOAL	NEW CLUBS	DROPPED CLUBS	QUARTER	MEMBER GROWTH NET GOAL	MEMBER GROWTH ACTUAL	DROPPED MEMBERS ACTUAL (including transfers)
JULY/AUG/SEPT	0	0	0	JULY/AUG/SEPT	50	15	30
OCT/NOV/DEC	1	0	0	OCT/NOV/DEC	50	18	27
JAN/FEB/MAR	1	0	0	JAN/FEB/MAR	50	18	25
APR/MAY/JUNE	1	0	1	APR/MAY/JUNE	50	15	21

GOALS AND ACTUAL NEW CLUBS CUMULATIVE



GOALS AND ACTUAL MEMBERS CUMULATIVE



DROPPED CLUBS: 1	23 CLUBS OF 64 ADDED 1 OR MORE NEW MEMBERS	<u>GENDER DISTRIBUTION</u> MALE 753 (66.87%) FEMALE 373 (33.13%)
<u>DROPPED MEMBERS</u> DECEASED 17 CLUB CANCELLED 0 OTHER 85 TOTAL 102	CLICK HERE FOR CUMULATIVE MEMBERSHIP DATA	TOTAL FAMILY UNIT MEMBERS 247 FAMILY MEMBERS PAYING HALF DUES 125